

# WHY THE BANNERFRAME?

- *Print Finishing - No more Eyelets, Welding, Chonk or Specialised Finishing required. Just trim to size and install*
- *Easy Conversion - Convert your current light box faces to the Banner Frame with minimal adjustment on-site*
- *Fast installation, easy graphic changes takes only a few minutes*
- *Super tension, get a perfect result - no matter the graphic size*
- *Custom 100mm Clip-Frame in any colour or finish*

**clip  
tite**  
display systems

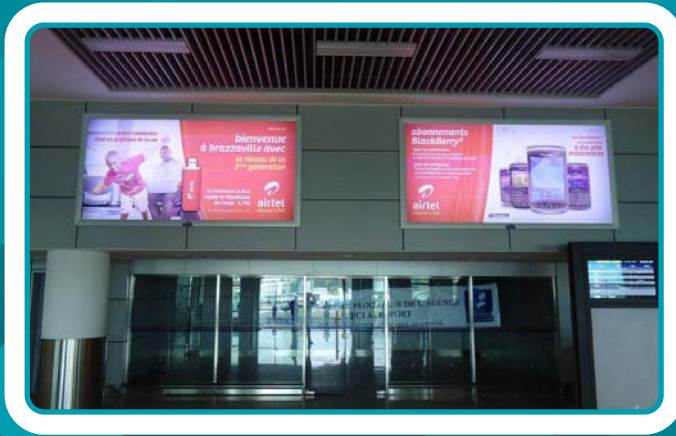


**SUPER  
TENSION**

[www.clip-tite.co.za](http://www.clip-tite.co.za)

**TEXTILE • PVC • CANVAS**

# NO LIMITATIONS ON APPLICATION



Wall Mounted • Indoor/Outdoor/LED Illuminated • Double Sided Freestanding Lightboxes



Tel: 011 440 4910 • E-mail: [info@clip-tite.co.za](mailto:info@clip-tite.co.za)

*Specialised installation teams available for your assistance on new or change over installations*